

Dächer für mobiles Leben

SCA



Assembly Instructions

Sleeping roof SCA 124	Art.-No.: 168715
Reinforcing frame SCA 124 (Crossbar)	Art.-No.: 168486
Reinforcing frame SCA 124 (Two-part side rail)	Art.-No.: 168568

These assembly instructions are intended for the complete sleeping roof construction.

C.F. Maier has released and verified only the complete construction set.

All statutory provisions must be observed.

Important information for the acceptance by the Technical Supervisory Association:

The vehicle is constructively modified by the roof construction resulting in the expiry of the operating licence.

When the assembly works are finished, it must be applied for a new operating licence according to motor vehicle construction and use regulation C.U.R. in effect presenting an official expertise by an inspector for motor traffic or an official expert.

1. Preparation of the vehicle

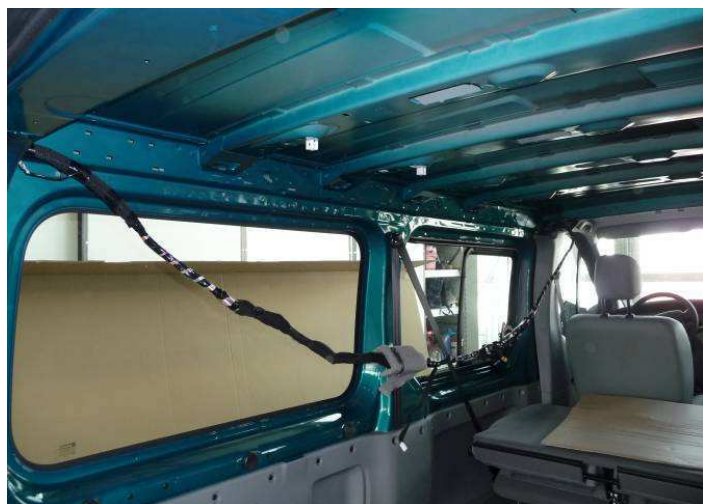
Cover the walking area of the vehicle with firm material (corrugated cardboard, press board etc.).



Dismantle the inside roof lining as well as the sun visors. Heat the sound absorbing panels (if there are any) with a hot-air dryer and remove them with a spatula.



Remove the lengthwise and crosswise running electric cables carefully from their fastening as to prevent the roof cover from being damaged.



Seal all vehicle openings of the car body using a varnish-compatible adhesive tape in order to prevent chips from entering! It is also possible to use the foil from the packaging.

Seal all the openings as aforementioned, particularly in the area of the side windows, as chips can fall in here easily from above and it is very difficult to remove them after they have fallen in.



Encase the inside of the vehicle by generously sticking foil to the area of the cut-out in order to prevent falling chips from entering the interior.

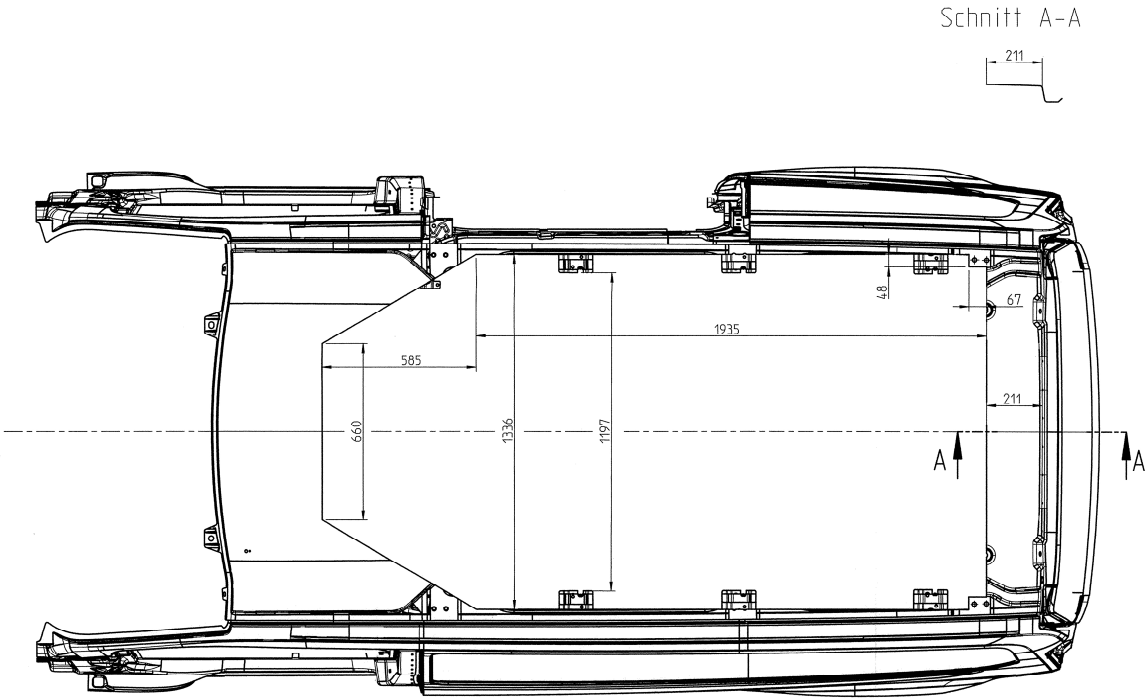
Furthermore, the roofing sheet must be well secured against falling down when it has been cut out.

Important information: Please pay attention that the electric cables are not placed in the cut-out area!



2. Cutting out the roof:

Transfer the outline of the cut-out to the vehicle's roof according to drawing 66-1438.



Drawing 66-1438

Rebore the corners with a borer of 12 mm diameter.



After that, you can cut out the roof with a special saw for car bodies, starting from one of the corners.

Attention: Cut out only the outer roof sheeting and not the bows or webs holding the six threads on each side.

Important information: Protect the roof from falling down!



Then, the bows must be sawn through directly behind the reinforcing.

The internal dimension between the bows is 1197 mm (see drawing).



The clips are cut with a special saw for the car body. Please pay attention to the wiring harness!



All cutting edges must be clipped, wood shavings thoroughly removed and all cutting edges or bare spots treated with anti-rust priming coat.



3. Fitting of the reinforcing frame

Place the reinforcing frame (the crossbar and the two side rails) onto the body shell and screw them together with the screws M8x20 and the retaining washers.



Mark out the fitting position of the reinforcing frame and then dismount the reinforcing frame again.



4. Bonding in the roof reinforcement

Prior to bonding in, the bonding surfaces at the vehicle and at the reinforcement frame must be cleaned with cleaning agent Sika 205.

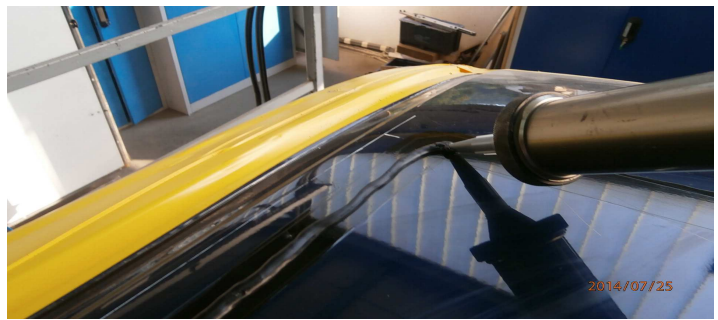


After that, please apply Sika-Primer 206 G+P to all surfaces concerned. Lightly, but holohedrally. Again, use a cloth for the application.

The Primer should be vented for at least 20 minutes!



Apply Sika 252 to the corresponding surfaces of the frame (for the crossbar, see top picture, for the side rails bottom picture).



Place the reinforcing frame onto the body shell, screw all three parts together with each other and also with the body shell itself.

Again, fix the reinforcing frame with screw joints.



Rivet the fixing plates on the reinforcing frame (6 fixing plates x 2 rivets 4.8 x 16.9 mm aluminium/steel).

Thoroughly remove excessive Sika after riveting by using a particular Sika removing agent.

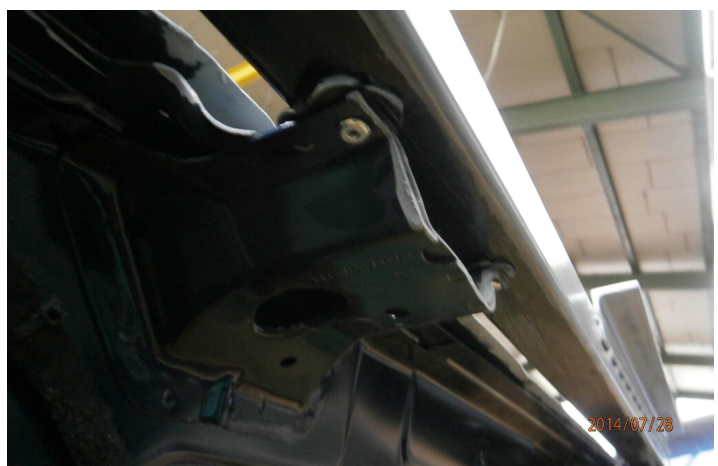
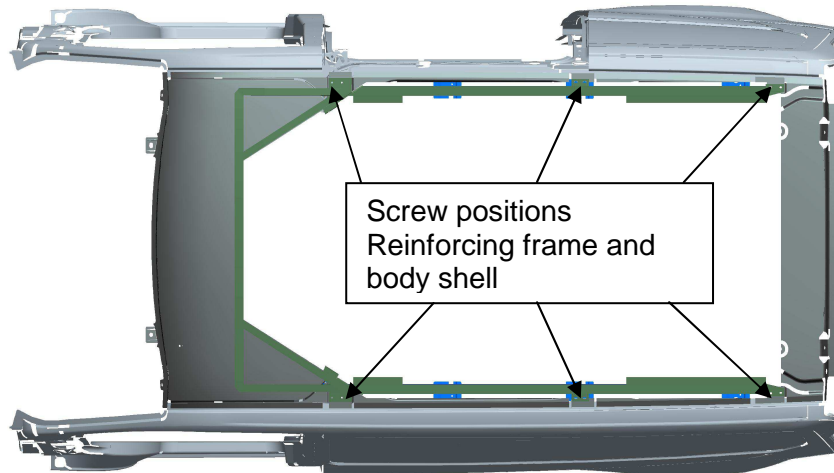


Illustration for the fitting and screw connection of the roof reinforcing

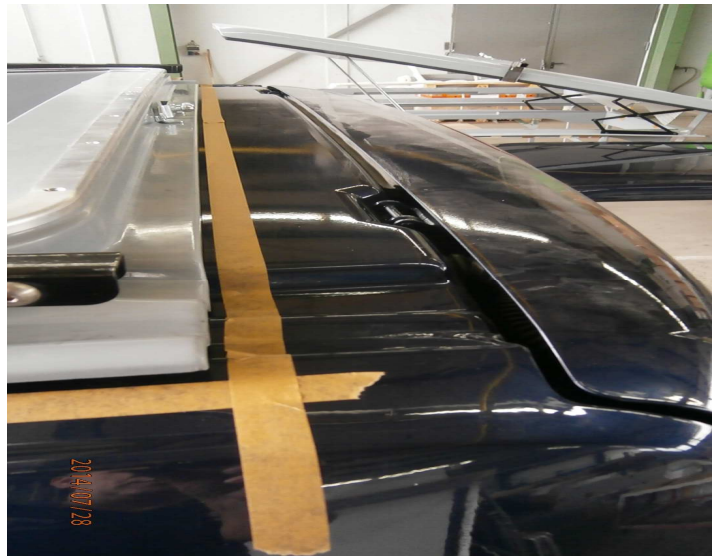


5. Assembly of the sleeping roof

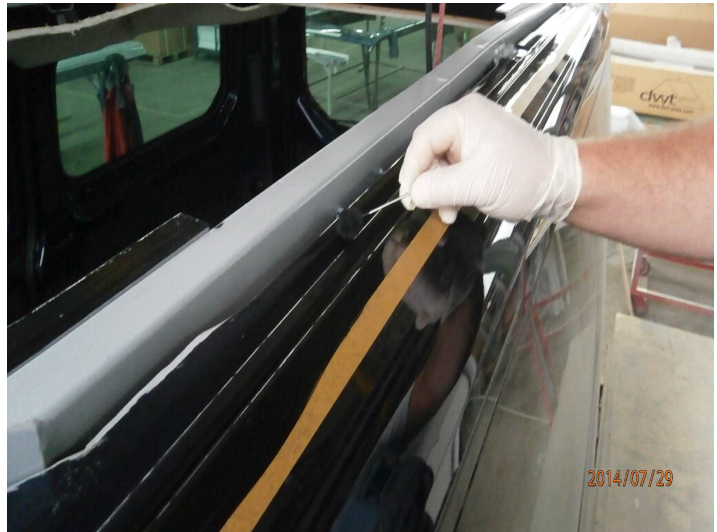
Place the assembled sleeping roof (condition at the time of delivery) onto the vehicle and open the roof. Support the roof shell in front. After that, align the spoiler of the platform with the contours of the windscreen as well as with the lateral drip rail.



The vehicle must be masked round and round with adhesive tape alongside the cutting edge in order to prevent contamination of the car body when applying the primer or by excessive adhesive. After that, the roof can be removed again.

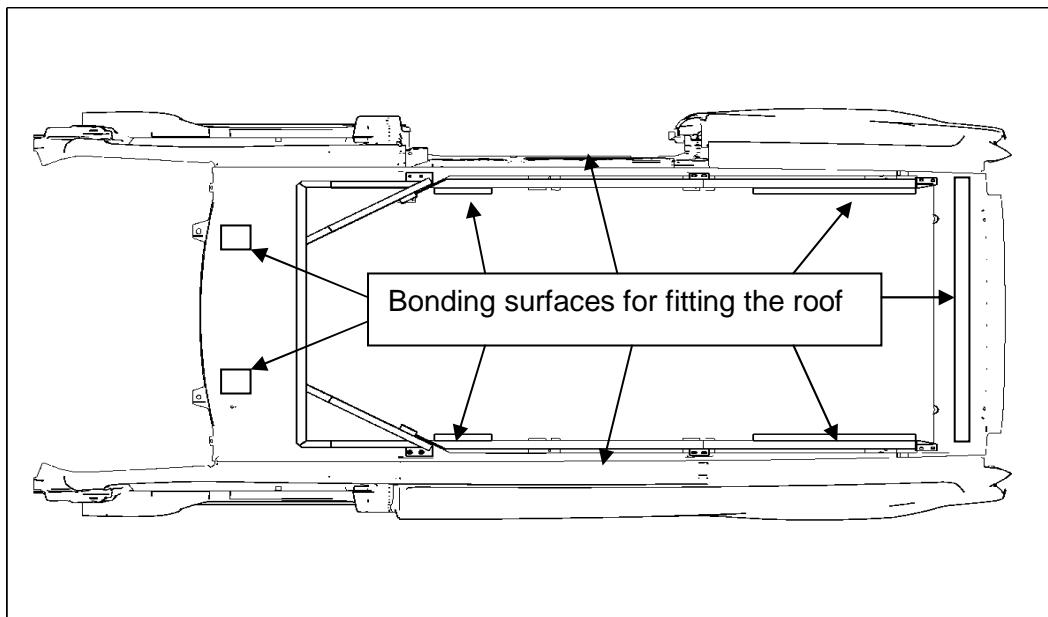


Neatly pretreat the bonding surfaces according to drawing 194/3 with cleaner Sika 205 (bonding surface spoiler fastening in front and bonding surface support sheets / do not forget reinforcing frame!). Roughen the surfaces to be bonded at the platform with abrasive paper.



Then, lightly apply Sika-Primer 206 G+P but covering the complete surface (platform and car body!).

The flash off time is at least 20 minutes

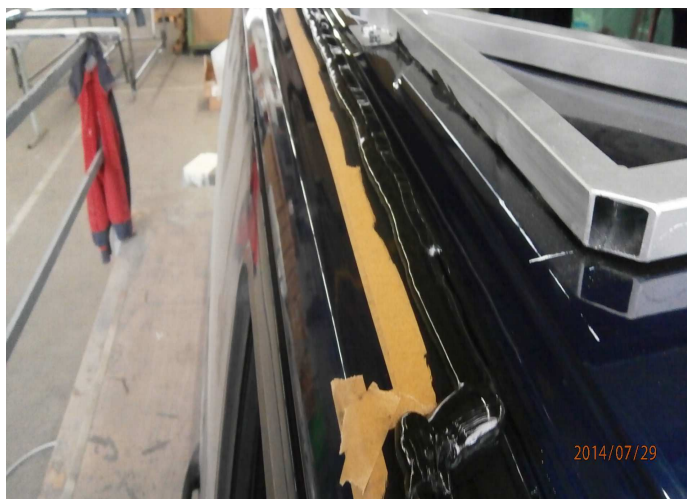


Apply Sikaflex 252 sufficiently onto the bonding surfaces after exhausting the air from around the product.

Then, the roof can be replaced and re-aligned again. In the area of the spoiler, the platform is pulled onto the roof sheet using a strap.

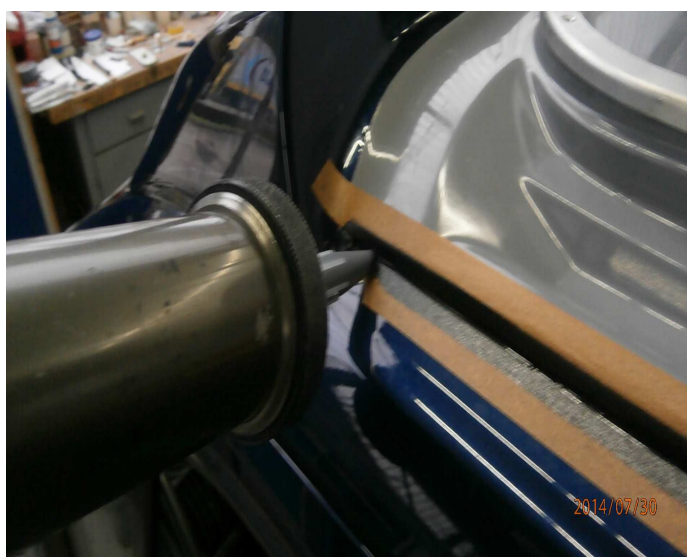
In the middle of the platform it can be pulled down either by hooking the gas spring or by attaching screw clamps within the vehicle.

Important information: Pay attention when placing the roof on top that the bellows has no contact with the adhesive (contamination!).

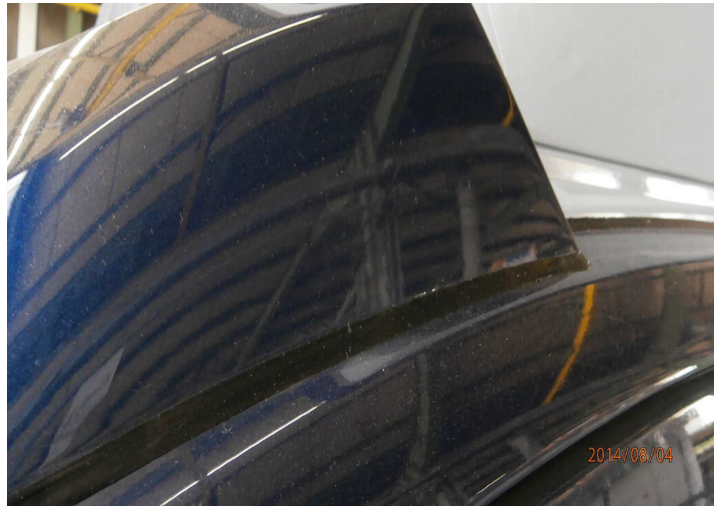


The external cutting edges on the platform must be neatly masked (the car body has already been masked after replacement and alignment).

Fill the sealing joint neatly and completely with Sikaflex. Remove excessive Sikaflex evenly with a rubber spatula or simply with your finger.



After removal of the adhesive tape the joint must be polished once more with a sleeking agent in order to obtain an optimal result.



Then you can mount the lateral and rear gas springs. The preloaded gas springs must be hooked into the ball heads and secured with the provided locking springs. As soon as all gas springs have been hooked, the supports can be removed again.



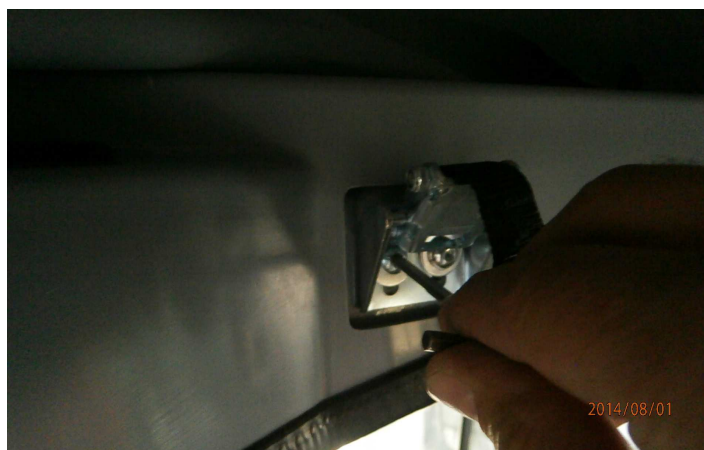
Now, you can install the slatted frame and mount the gas springs there as well.

Attention: The gas springs must always be mounted with the piston rod at the bottom when open!

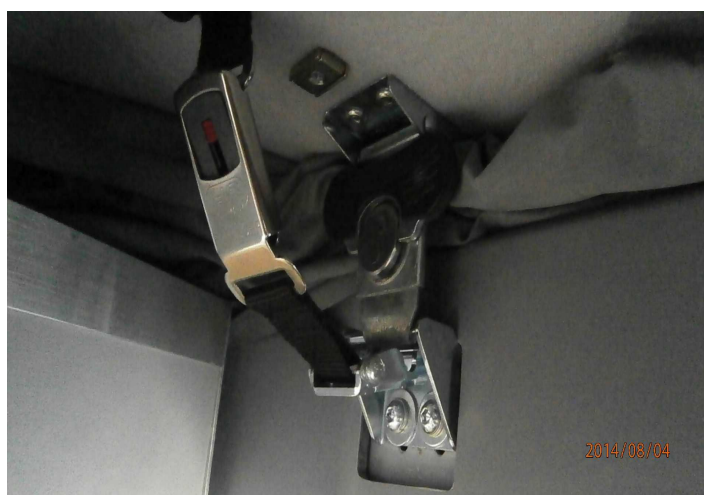


6. Assembly of interlocking

Fix the provided interlocking in the allocated cut-out using the provided screws (M6 x 16 + retaining washers).



Close the roof and adjust the interlocking by moving it to the top or bottom to achieve that the upper interlocking engages into the lower interlocking without exerting pressure. Finally, you can tighten the screws.



7. Tools used:



C.F. Maier Europlast GmbH & Co KG

Abteilung SCA
Postfach 11 60
89548 Königsbronn
Wiesenstraße 43
89551 Königsbronn

Tel. +49 7328 81-225
Fax +49 7328 81-277
Mail info-ep@c-f-maier.de

www.sca-daecher.de
www.c-f-maier.de